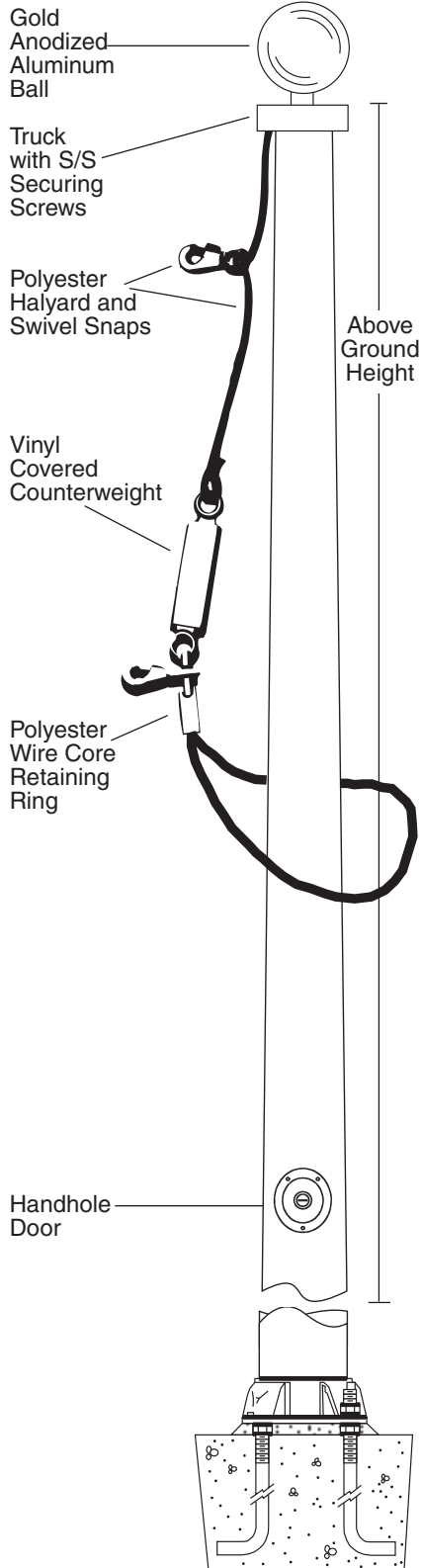
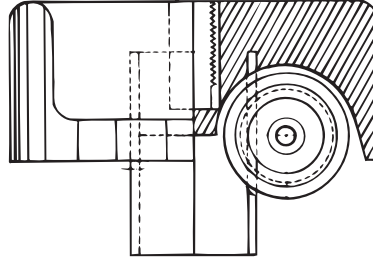


Fiberglass Flagpoles

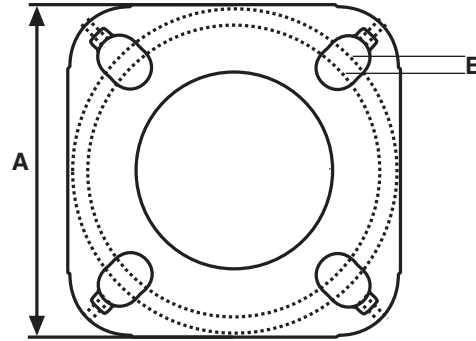
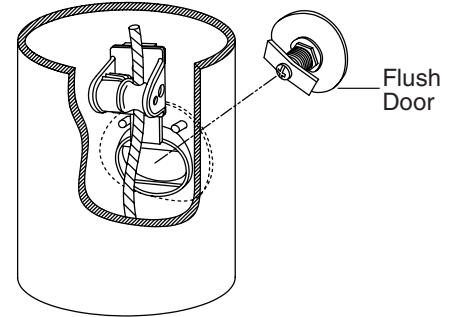
Anchor Base
Fiberglass
Internal Halyard
Flagpoles 20 IAB - 35 IAB



Fiberglass Stationary Internal Truck



Internal Cam Cleat and Handhole Door



Model Number	PLP 20IAB	PLP 25IAB	PLP 30IAB	PLP 35IAB
Above Ground Height	20'	25'	30'	35'
Butt Diameter	5.75"	6.5"	6.5"	7"
Top Diameter	3"	3"	3"	3"
Pole Weight With Base (lbs.)	41	61	78	97
Shipping Weight With Base (lbs.)*	81	107	130	156
Ball Diameter	5"	5"	6"	6"
Halyard	#10	#10	#10	#10
Truck	F/G	F/G	F/G	F/G
Snaps	Brass Swivel	Brass Swivel	Brass Swivel	Brass Swivel
Standard Flag Size	4x6	4x6	5x8	5x8
Anchor Bolt Length	25"	25"	25"	25"
Bolt Diameter	3/4"	3/4"	3/4"	3/4"
Exposed Thread	2.75"	2.75"	2.75"	2.75"
Bolt Circle (B)	8"-9"	9"-11"	9"-11"	9"-11"
Base Width (A)	9" sq.	10.24" sq.	10.24" sq.	10.24" sq.

* Shipping weight includes weight of packaging, fittings, and anchor bolts.

SPECIFICATIONS

Provide a Fiberglass Reinforced Plastic (FRP) Internal Anchor Base Flagpole Model # _____ IAB

The flagpole shall have a mounting height of _____ feet. The butt diameter shall be _____ inches and the top diameter _____ inches. The pole weight shall be approximately _____ lbs. with a total shipping weight of _____ lbs.

The flagpole shall be manufactured of fiberglass woven roving and polyester resin with 75% of the reinforcing fibers oriented in the axial plane for maximum stiffness and 25% in the radial plane for required hoop strength. Load calculations shall be based on AASHTO and NAAMM standards with the pole designed with a two to one safety factor for 125 m.p.h. winds, unflagged with a 1.3 gust factor.

The pole shall have an ENTASIS taper and shall be void of any vertical mold seams.

The pole shall be sanded smooth and coated with a high gloss Aliphatic Polyurea coating system based on Dual Cure chemistry, providing extended UV protection and weatherability.

The color of the flagpole shall be:

Standard white, bronze, black, or other, as specified _____. (Select one)

The flagpole shall be equipped with PLP standard fittings:

- A _____" gold anodized aluminum ball
- A single sheave internal fiberglass stationary truck with stainless steel securing screws
- #10 polyester halyard
- Polyester wire core retaining ring
- Vinyl covered counterweight
- Stainless steel and nylon internal cam cleat
- Handhole door with cylinder cam lock
- Brass swivel snaps with vinyl covers

ANCHOR BASE: Cast Aluminum A356 alloy aluminum, the anchor base shall be heat treated to a T6 condition. The shaft shall be cemented and pinned to a 21" aluminum pipe which shall be inserted into the anchor base casting, and casting and shaft shall be joined by continuous circumferential welds at the outside top and inside bottom of that anchor base.

The base shall be furnished with 4 anchor bolt covers and 4 anchor bolts with 2 nuts, 2 flat washers and 1 lock washer per anchor bolt as follows:

- 3/4" x 25" anchor bolt
- 2 3/4" exposed thread recommended/projection

EXCEPTIONS: _____

PROJECT: _____

LOCATION: _____

DATE: _____